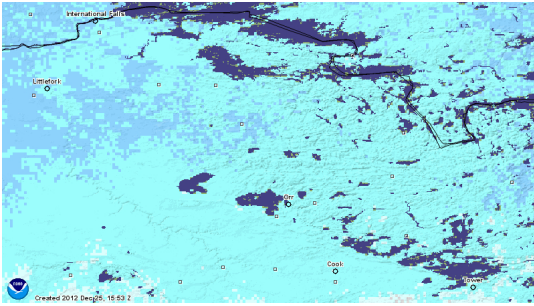


## TRAIL GROOMING

Written by Dave Pramann

Tuesday, 25 December 2012 11:49 - Last Updated Tuesday, 25 December 2012 16:27

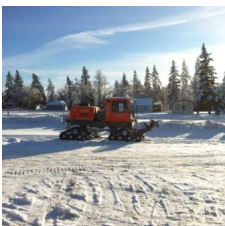
---



### **4-8" LIGHT BLUE, 8-12" MEDIUM BLUE, LAKE ICE □ DARK BLUE**

Today's Christmas Arrowhead showin 4-12" snowcover, last nights reindeer flyby reported to me Friendly Anoka Tower at least north half trail machine groomed....fast. Roster stacked 6 yrs worth of bike winners, 4-5 yrs foot/running winners, best depth talent across Mens and Womens field than any year I can think of.

If travel mode listed erroneously on roster please advise, also anybody thinking of skiing this year please let us know cause you are special. While we most love giving nice donated sponsor products to everyone at Arrowhead Famous Schwag drawings, will have stuff for mens and wo mens division winners. WeeHaw !



## **TRAIL GROOMING**

Written by Dave Pramann

Tuesday, 25 December 2012 11:49 - Last Updated Tuesday, 25 December 2012 16:27

---

### **GROOMER AT ERICSBURG**